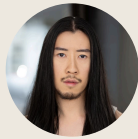




CATHERINE
Rebecca Lin

毕业于 *University of Southern California*, 活跃于话剧、沉浸式戏剧与 *Stage Reading* 领域, 曾参与 *Stage 4th Society* 的 *stage reading* 作品《熊》。

$$\Delta_{\text{net}} = (\partial Q / \partial t) \cdot \epsilon^2$$



ROBERT
Sky Kao

Sky 是一名跨领域艺术家, 目前正在探求演戏, 歌唱与舞蹈的领域。



HAL
Mickey Huang

温哥华话剧团成员, 亦为非盈利戏剧组织 *Stage 4th Society* 的创始成员之一, 长期参与戏剧创作与舞台实践。

$$\iint_S (\nabla \times F) \cdot dA = \oint_C F \cdot dr$$



CLAIRE
Annie Lo

Annie Lo is a bilingual Taiwanese-Canadian actor and emerging talent who began pursuing acting in 2023 after a career in the tech industry. Alongside her performance work, she is also a Pilates instructor.

$$\text{rank}(A) + \dots$$



DIRECTOR
Tong Lu

Stage 4th Society Co-founder, 温哥华话剧团演员, 戏剧和舞台实践的爱好者。



MASCOT
Arlo

Arlo is a 5-month-old Husky mix puppy and beloved member of the cast, bringing joy, warmth, and the occasional delightful distraction. He can often be found attentively observing rehearsals and performances.

工作人员 | CREW

$$\|a\| = \sqrt{(a_1^2 + a_2^2 + \dots + a_n^2)}$$

发展统筹 Development Coordinator	Jenny Wang	灯光设计 Lighting Design	Pui Leung
制作人 Producer	LT, 渣布斯, Zora	音效 Sound Design	渣布斯
舞台监督 Stage Manager	Morie Zhao	化妆 Makeup	Zijun Li
舞监助理 Assistant Stage Manager	曲曲, Nicole, Kevin	宣传 Publicity	Echo Huang
布景顾问 Set Design Consult	Victoria Chen	平面设计 Graphic Designs	盛晴
舞台道具 Set & Props	Michelle		

SPECIAL THANKS · 特别鸣谢

Lilian, Ivy, Joyce, Jemma, Roger

$$\text{Tr}(AB) = \text{Tr}(BA)$$

$$\oint B \cdot dl = \mu_0 I$$